

ANDREW WYETH



“Painter of the People”

# Biography

- ◉ Born July 12, 1917 in Pennsylvania
- ◉ Youngest of 5; Artist father
- ◉ Sickly- homeschooled
- ◉ Married Betsey James when 22 yrs. old
- ◉ Two sons, one became an artist
- ◉ Died 2009

# Career

- Learned art from his father; studied art history on his own
- 1<sup>st</sup> art exhibit at age 20
- Harsh criticism from art critics: “too sentimental, “illustrations”
- People of American liked his work—became known as “Painter of the People”

# Painting Style

- ◉ Watercolors and egg tempera paints
- ◉ Drybrush technique- little water; many layers
- ◉ Shades of grey & brown
- ◉ Realistic and regionalist style
- ◉ Landscapes (Maine & Pennsylvania) and people



Andrew Wyeth  
Turkey Pond, 1944

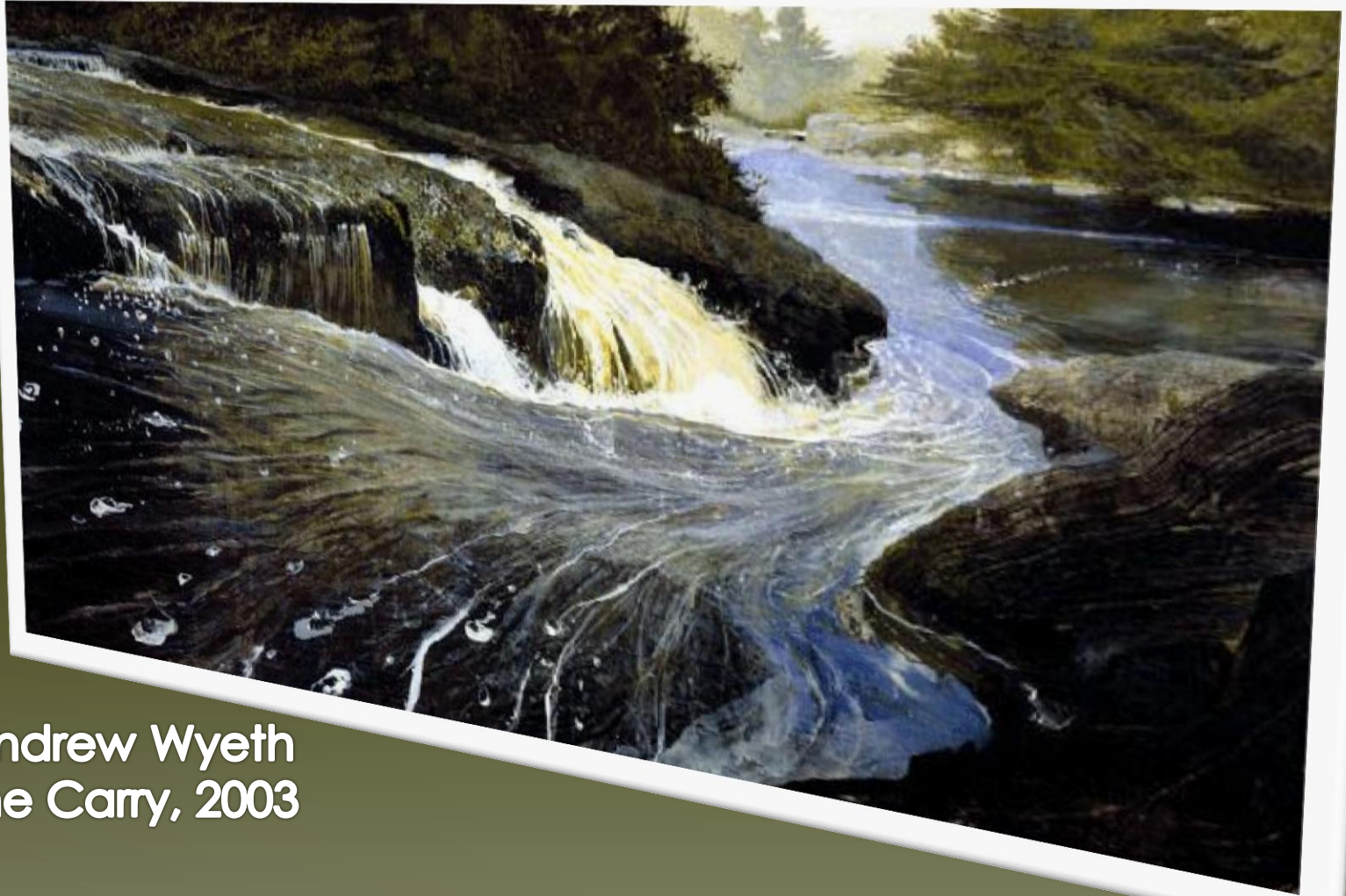




Andrew Wyeth  
Farm Road, 1979



**Andrew Wyeth**  
**Baleen, 1982**

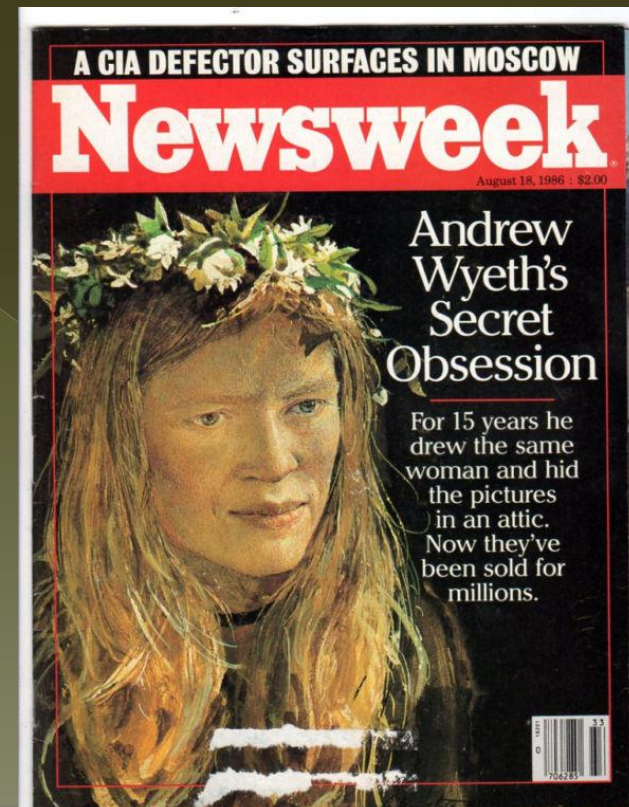


Andrew Wyeth  
The Carry, 2003



# Fame and Fortune

- TIME magazine covers, 1963 & 1986
- Newsweek magazine cover, 1986



# Christina's World



# Fame and Fortune \$\$\$\$\$\$\$\$\$

- President Johnson gave Wyeth the Presidential Medal of Honor in 1963
- President Bush gave Wyeth the National Medal of Arts in 2007
- His paintings sell for millions of dollars & are found in many museums



# Art Project

- Create a watercolor work of your choice using the drybrush technique